



FIRST STEPS

WELCOME TO SENSEVEN

YOUR ENTRY INTO SIMPLE AND DIGITAL
INDUSTRIAL INSPECTION

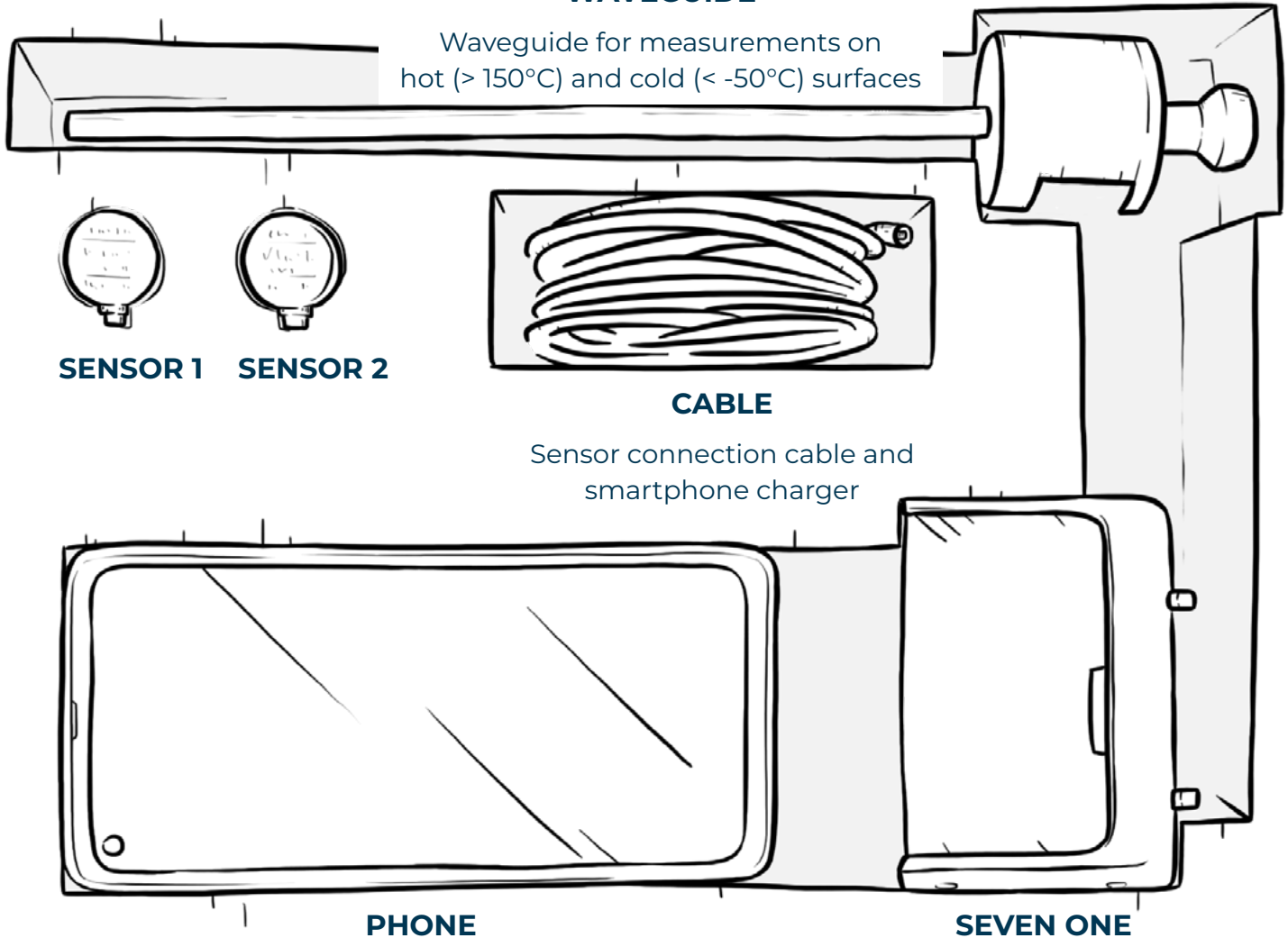


More information about the system and its handling online at : www.senseven.ai/valve-sense

SYSTEM COMPONENTS

WAVEGUIDE

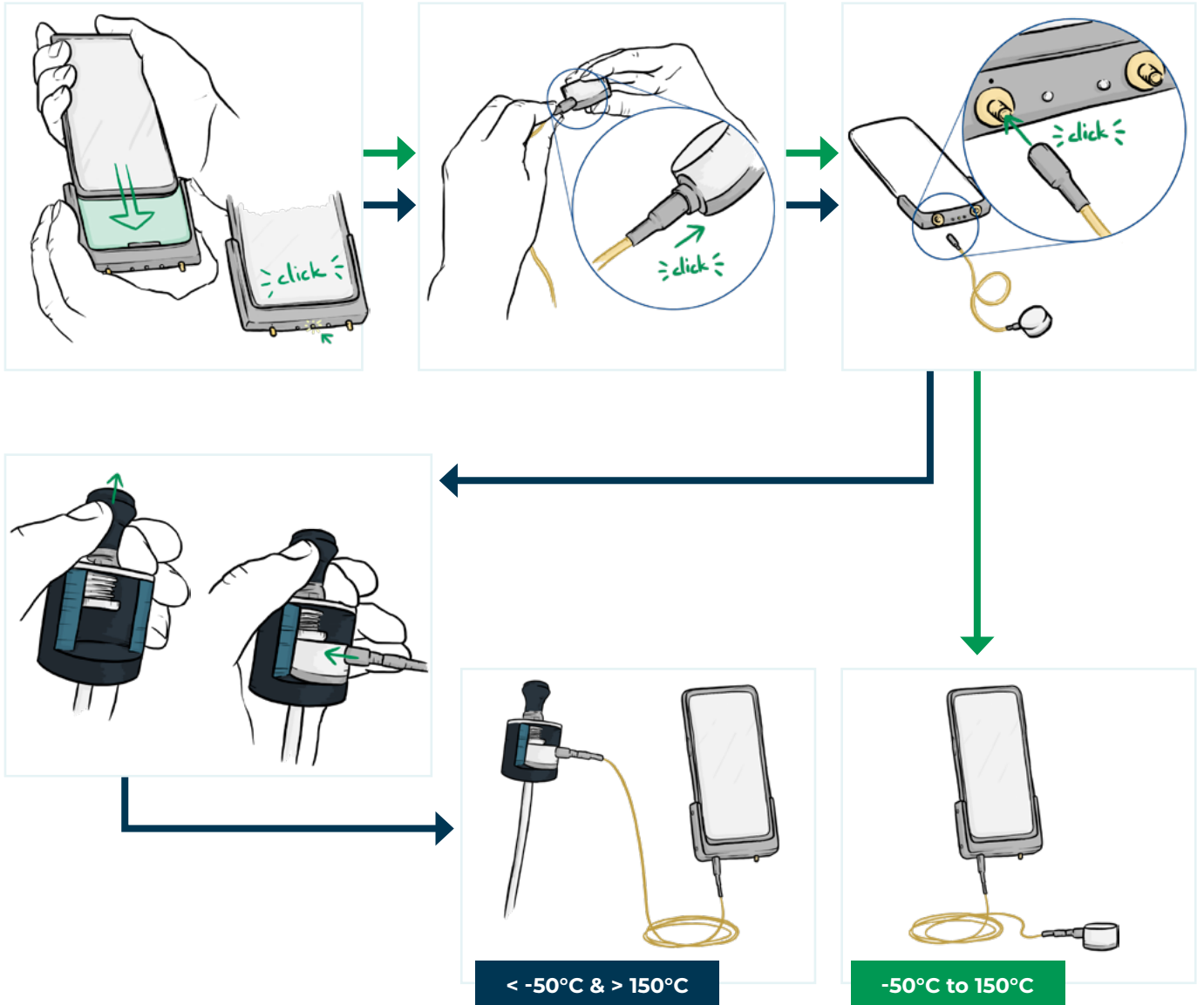
Waveguide for measurements on
hot ($> 150^{\circ}\text{C}$) and cold ($< -50^{\circ}\text{C}$) surfaces



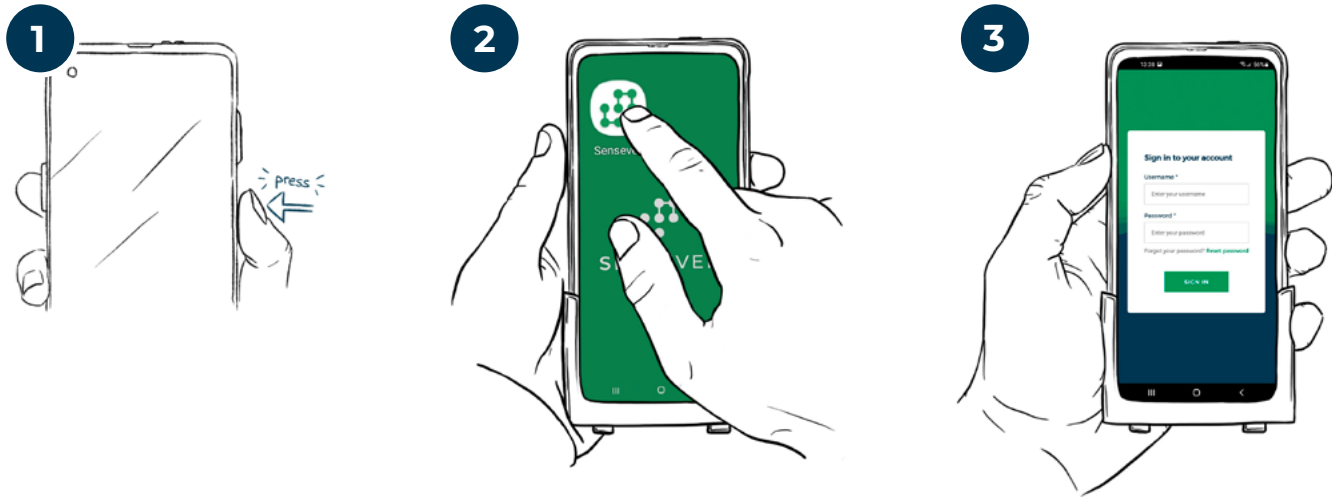
Samsung Galaxy XCover Pro

Analogue-Digital-Converter

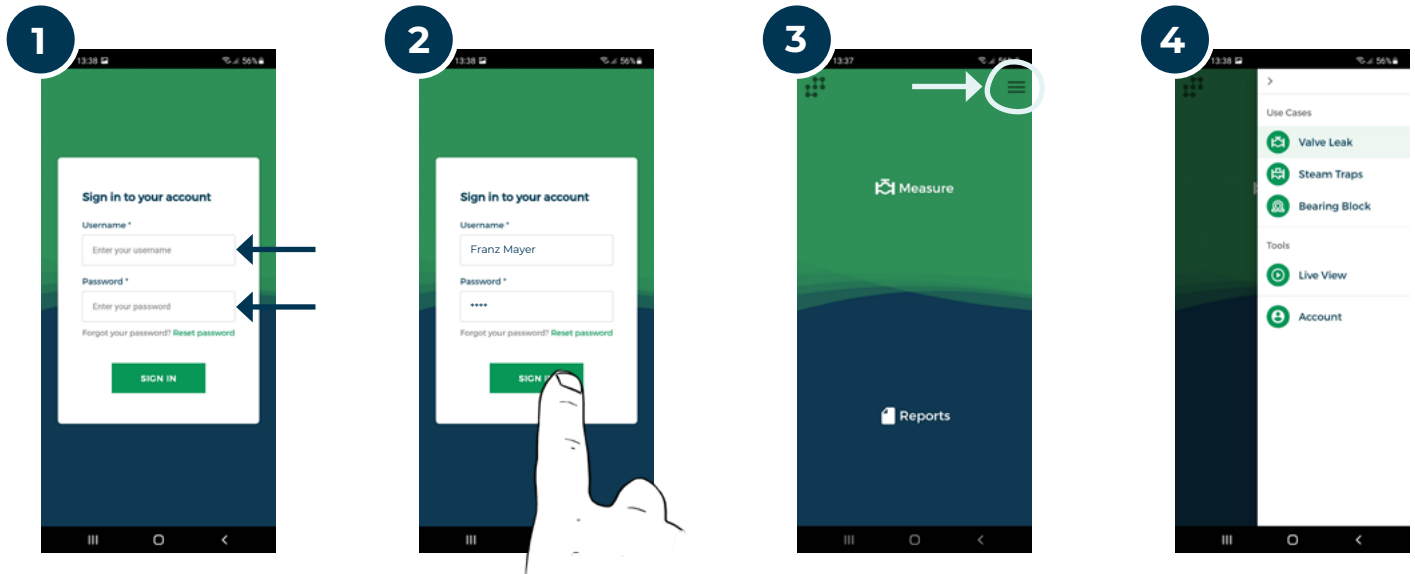
ASSEMBLY OF SYSTEM



LAUNCH SMARTPHONE AND APP

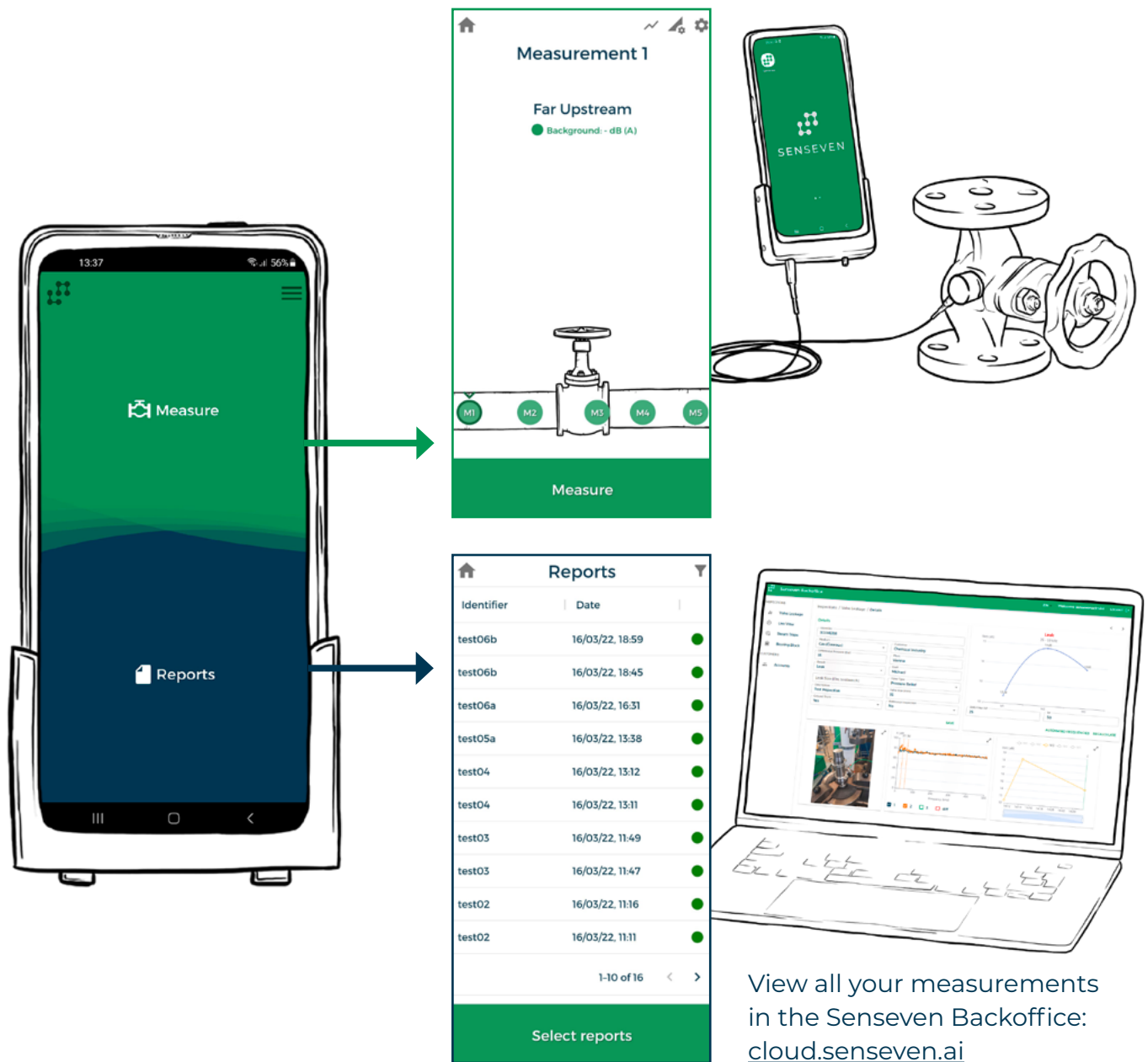


LOGIN AND SELECT YOUR USE CASE



TIPS AND TRICKS





For more information or support visit www.senseven.ai or get in touch via office@senseven.ai